



## CHRIS-CRAFT STINGERS

### Welcome to the May, 2013 Newsletter!

Welcome to the May, 2013 edition of the chriscraftstingers.com newsletter.

Warmer weather has finally come to the Midwest – boating season is just starting. Activity is picking up and I'm seeing a lot of Stingers for sale I haven't seen before. The number of Stingers in the official registry is now up to 567.

New parts have been listed for sale on the web site. These parts include a fiberglass swim platform, cabin bench-back, gauge/switch panels, and more – all from a 1986 260. If you haven't been to the parts page lately, please check it out.

This month's newsletter features an article from Greg Gasch - a member who has converted his 1988 312 Stinger to an open-bow layout. He's done a top notch job with the implementation – and how he accomplished it provides an interesting read. The article will be split into 2 parts – the second part will run in next month's newsletter.

Until next month,  
Han

### 312 Mid-Cabin Open Bow Conversion (Part 1 of 2) by Greg Gasch

Six years ago it finally happened; I bought a 312 Stinger that I always dreamed of. It was a 1988, blue and in good condition. The only trouble was most of the cabin upholstery

was gone. But the great thing about it was that my wife approved! The only problem – we wanted an open bow layout. We spend virtually all of our time cruising the Mississippi and much of that on the beaches there. The kids wanted an open bow because riding in the back was “boring” and they had grown accustomed to the wind in their face with our old open bow runabout... not to mention, beach access is a breeze with an open bow. So the challenge was on - being a lifetime boater, an engineer by trade and one who loves a project, my journey to convert the 312 to an open bow layout began.

#### Layout & Design Goals

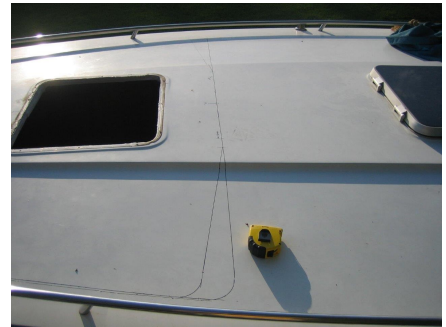
The layout and design took some thought. Key goals were: 1) ensure structural integrity; 2) allow ease of access so that one could have a beverage in hand and make their way from the cockpit through the mid-cabin and to the open bow without putting the drink down nor touching a knee on the cabin sole; 3) maintain enough mid-cabin space so that my 6'-2" body could stretch out in the shade for a nap; and 4) in the bow area, have two front facing bucket seats and a small rear facing bench at the front. I'm glad to report that all the goals were achieved. In hindsight, it seems ironic that Chris Craft's engineers subconsciously had this design in mind. Thanks guys, wherever you are! The forward v-berth was an adequate size for the open bow thus simply opening the deck above it made the space. But believe me, it wasn't quite that simple.

#### Cutting

It takes real guts to take a saw to a perfectly good boat and cut a huge

hole in its deck.

First priority was creating a convenient place to work from. An old dock frame was set up alongside the boat with some steps from scrap wood. On a project like this, ladders are out of the question! Next the layout of the cut was done.



With the front hatch removed, its hole was used as a reference to establish where on the deck the bulkhead was and where the cuts should be. (Note to self... don't use a black Sharpie pen on gel coat! Solvent turns it brown - the solvent is bad for the gel coat, and it takes two years of sunshine to fade the brown stain to white again!) Masking tape designed for outdoor use is the best layout tool. All corners get generous radiuses to prevent high stress and spider cracks from forming.



#### Structural Engineering

Next, my attention turned to the

cabin interior and how to access the bow from the mid-cabin - specifically laying out the doorway. The stock forward bulkhead has a large oval cut out for access to the v-berth. The part that is overhead will obviously be a head knocker and prevent achieving goal #2 so it's got to go. But looking at it, one surmises that in structural engineering terms, it is in tension helping to hold the hull sides together. At this point, work was stopped to estimate what cutting the deck and the bulkhead would do to the hull's integrity and strength. Solving this was done with a scissors and some heavy paper. Folding the paper in half, cutting an arc forming the curve of the bow and taping the cut edge together, a mock-up of a typical hull was created. Holding the stern in one hand and pushing up on the bow as would happen when plowing into a wave, we see that the wave's force causes the hull to open up in the area where the chine flattens out. That exercise confirms that the upper part of the forward bulkhead truly is in tension and helps to hold the hull together. So cutting the deck AND the upper bulkhead would weaken the bow's structural integrity. (This exercise ignores the strength that the v-berth and cabin floors offer to the hull.) Some careful thought brought me to the conclusion that the best enhancement to this configuration was to bond the hull, deck, and forward bulkhead together as a unit with fiberglass. The bulkhead would be rebuilt to fill the entire area other than the doorway to the bow thus meeting goal of structural integrity - the most important one!



Another attribute was that the bow should be self-bailing. So holes were

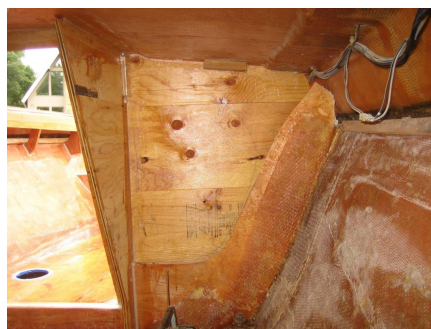
drilled in the bulkhead's lower corners where it meets the hull. Scuppers were fastened in the holes and plumbed aft along the hull about 12 inches where a 90° thru-hull directs the water out. For safety, the scupper lines included ball valves so when closed, heavy seas or an overloaded boat would not flood the bow area.

Lastly, with the upper bulkhead removed and the doorway mocked up in cardboard, one still couldn't get into the bow area without putting a knee on the bow's sole. The solution was to angle the doorway back about 20° and also cut a notch in the deck the width of the doorway. This allows one to stand on the cabin's sole while your head and shoulders are above the deck.



### Fabrication

The award for the robustness of this project goes to West System [www.westsystem.com](http://www.westsystem.com) (NOT West Marine). Not only do they manufacture quality epoxy resin and materials, their customer service is fantastic. Spend some time on their website and you'll be ready to tackle any fiberglass project. A 4x8 plywood table makes a good work area for chemical mixing and laying out matting.



Mocking up patterns out of cardboard is the easiest way to cut the plywood pieces with the precision necessary for a strong, tight fit. Use sheets of double-wall cardboard to make patterns. One thing I learned about my Stinger - nothing and I mean nothing, is symmetrical from one side of the boat to the other. The simplest way to make the patterns is to cut 3" strips of cardboard and then piece them together in a picture frame manner to create the profile of the part needed. Use hot-melt glue to connect the pieces together. Numerous short pieces glued together can make a curved shape too. In this case, the strips were glued together to create the new bulkhead panels - one for each side of the doorway. With the pattern in hand, cut the plywood out with a jig saw. Although the purist would say to use marine grade plywood, cost and availability forced me to use 3/4" A-C plywood. All new wood throughout this project was 100% covered by resin and since none of it had direct contact with water, it was a safe substitute. All joints throughout the project were bonded with West's 105 epoxy resin mixed with West's 209 hardener and 404 High Density Filler. The combination makes a mayonnaise like material that is easy to apply and stays in place well. Your hardener choice will determine the pot life (open time) of the resin. West strongly recommends the 206 (20 minute) or 209 (40 minute) for newbies. Hardener 209 is especially good to work with when it is hot out. The resin cures faster in hot weather. You work at a slower pace overall but it allows plenty of time to get things fitted correctly without wasting unused resin. The 105/209/404 mixture creates the "glue" to bond pieces together. The next step is to reinforce the joint with fiberglass tape on all sides. The tape spreads out the mechanical stresses across the adjacent pieces.

With the bulkhead and doorway fabricated, attention moves to the gunwales and bow. The paper hull

exercise described previously showed that the gunwale deck area is in compression when the boat hits a wave. Therefore, strengthening of this area is critical. A flange on each side was added to keep the deck rigid and resist bending. Those flanges were reinforced with gussets that were bonded to the hull.

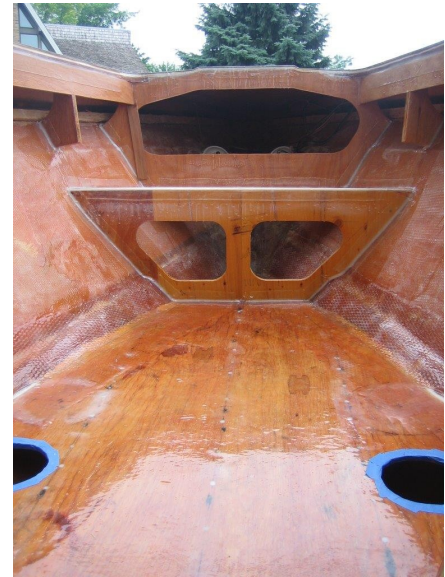


The assembly as a whole, keeps the deck rigid and the entire fore part of the boat tied together as an integral unit. There was concern about using only the tensile strength of the resin

and its bond to the 20 year old base substrate would perform. A mechanical enhancement was achieved by taking a router with a round-over bit and routing out the balsa coring material in the deck. This groove formed a square corner on its top and a radiused corner on its bottom. The groove was filled with thickened resin and fiberglass cloth tape was tucked into the groove and laid down the face of the flange. This simple feature brings great strength between the flange and the decking.

Finally we get to the front of the bow area. Here a bench seat frame is fabricated out of 3/8" plywood and a front bulkhead forms the seat's back. Under the bench will be anchor storage and behind the flip-up back will be storage for life jackets. All these components were glassed in the same manner as before with resin modified with 404 to fair the

corners.



*Greg's story will be continued in next month's newsletter. For more pictures of Greg's boat, search for Corsa Avanti on the galleries page at [chris craftstingers.com/galleries.php](http://chris craftstingers.com/galleries.php).*

## Stingers for Sale

Below is a list of Stingers that have come up for sale during the previous month. The information for each boat in this section accompanied the owner's original advertisement. If you are interested in one of the boats for sale, and need more information, please contact me at [ccstinger@gmail.com](mailto:ccstinger@gmail.com).



Model: 1983 260  
Location: Moore, OK  
Asking Price: \$12,000

I have a 1984 Chris Craft Stinger 260 with new twin 383 strokers. It has newer paint with a 1991 tri-axel road runner trailer with 4 brand new tires. It has full stereo with 10" sub dual amps. The cabin is in great shape no cuts or rips. The hole interior is in fair shape the tops of the seats have a little discoloration due to the cover rubbing on them. Just had new throttle cables installed and both engines tuned in and everything serviced it is 100% lake ready. I'm asking \$12,000 obo



Model: 1986 222  
Location: Toledo, OH  
Asking Price: \$7,000

I am selling my stinger 222 because I got a new job and won't have time to use it! It has a 350 motor with a Bollett cam and a gillies exhaust the whole motor has been redone and ready to go! Has a apha 1 out drive all fluids have been change and ready for the season, the sticker is good until 2015 and just got buffed and wax professionally for the 2013 boating season! I will give the buyer everything I have stainless steel solid hub prop life vest anchor and hand lines! Thank you for your time!



Model: 1986 222  
Location: Kissimmee, FL  
Asking Price: \$6,000

I have a '86 Chris Craft 222 Stinger 22 foot up for sale.. Its an Outboard 200 Mercury, 19 pitch prop, 60 gallon fuel tank, manual trim tabs, Garmin Depth/Fish finder, sleeps 3 comfy, Porta-Potty, About 5 life jackets, 1 anchor, large cooler, JBL CD player, Tendum Axle aluminum float on trailer, clear gas lines, new starter. It does need new speakers, some TLC.. overall BAD ASS BOAT!! Tops out with 4 people on board at around 68mph depending on weather.. Asking \$6000 OR BEST OFFERS.. This boat is worth \$30,000 in MINT condition.. NO LOW BALLERS!! Make an offer, worst I can say is no.



Model: 1984 312  
Location: Syracuse, NY  
Asking Price: \$12,499

1984 CHRIS CRAFT 312SL STINGER WITH TWIN 330HP 454'S WITH THRU HULL EXHAUST AND TRS DRIVES. COMES WITH 1987 QUICKLOAD ALUMINUM TRAILER BOAT HAS HAD RECENT STRINGER INSPECTION AND NEW MOTOR MOUNTS ALONG WITH ALL NEW DRIVE SEALS AND GASKETS. CAMPER CANVAS, COCKPIT CARPET ALL IN FANTASTIC CONDITION. FRESH WATER BOAT ALWAYS STORED INDOORS!!! A REAL SURVIVOR!!!!



Model: 1982 312  
Location: Colfax (Sacramento), CA  
Asking Price: \$25,000

Selling my 35 foot Go Fast Boat 1982 Chris Craft Stinger 312 SL. TWIN Engines! Reliable, low hour (under 140 hrs) fuel injected Mercruiser 502 engines (about 500 hp each). Well cared for and in incredible condition New Interior, just re-done in blue and white with Eddie Marine Billet Aluminum Seat Bolsters! I have moved and don't have the desire to store it and with new twin boys, we not use it much. Its time for someone else to enjoy her. 3 sets of props (mirage 25p and 27p, 25p cleavers) Triple axle trailer, just serviced. Just under 80 mph on GPS. \$25,000 Serious only and absolutely NO SOLICITORS!



Model: 1983 312  
Location: Loretto, MN  
Asking Price: \$9,000

Boat is apart. Twin 330 Horse Mercruiser 454's Velvet drive transmissions and TRS outdrives. On a steel galvanized trailer. Boat is white and blue and would need a complete interior. I have the old interior but needs to be redone. One of the 454's is freshly rebuilt. Stainless steel props. This would be a great performance boat when done. I just don't have the time to do it.



Model: 1984 260  
Location: Miramichi, New Brunswick, Canada  
Asking Price: \$12,000

28 foot stinger, completely redone from top to bottom! 454 with approx 550 horsepower, custom candy red paint job, thru hull exhaust, fresh engine and drive unit! price is firm!!!



**Model: 1984 312**  
**Location: White Lake, MI**  
**Asking Price: \$14,999**

UNIQUE AND AN EYE CATCHING 32-foot CHRIS CRAFT Stinger! Beige in color with red and black beauty stripes. Motors clean with excellent maintenance. Dual 454 Mercruisers (370 HP w 960 hours). Exterior Vinyl mint. The original cranberry interior is in excellent condition and sleeps 4 in cabin; not smokers and no animals. Camper canvas added to extend the Michigan boating season. Portapotty included. Handles well in the big water and ready for another trip! Fresh water boat. Road worthy trailer included.



**Model: 1984 390**  
**Location: Wheeling, WV**  
**Asking Price: \$25,000**

1984 Chris Craft 390X, Boat is in decent shape. comes with yard trailer. Twin 400 HP 454s with TRS Drives. New electronic ignition conversions. Engines run excellent, and have always been well maintained. Exterior is in nice shape, as are the drives.. Interior needs some minor refinishing due to sun faded vinyl, and leaking bow rail mounting holes.



**Model: 1984 390**  
**Location: Stuart, FL**  
**Asking Price: \$55,000**

One of the finest 390s in existence, particularly in the rare beige/brown/yellow/orange color scheme. All original engines and out-drives; right down to the clever props! Also original hardware, color, stereo, refrigerator, gauges and graphics. Still tops out at 60mph with light load. Engines recently rebuilt.



**Model: 1984 390**  
**Location: Duluth, MN**  
**Asking Price: \$26,900**

1984 Chris Craft 390 Stinger Boat for sale. Length overall with swim platform is 42'. Has two 454's with new velvet transmission, TRS drives, all new bearings and seals and Kieffer trim tabs. On triple axle Eagle trailer. Turn-key Miami Vice cruiser!



**Model:** 1985 260  
**Location:** Lusby, MD  
**Asking Price:** \$65,000

Too much to list - Complete Restoration, New Twin Merc 383 stroker packages with Bravo out-drives (all New, still under warranty(3yr warranty) and avail extended warranty. Complete drive-train put in last year. has trailer and kept on a boat lift, "all" work professionally done by Marina/certified mechanic. Not a handyman special. Have all receipts and documentation top to bottom. Comes with Slip fees paid for the rest of the year, full use and on remote controlled lift. \*\*\*Gauge cluster is the only thing on the boat that has not been upgraded, updated or replaced yet on entire boat\*\*\* Call for details Job Change, Moving to PA



**Model:** 1985 260  
**Location:** Miami, FL  
**Asking Price:** \$2,995

The legendary CHRIS CRAFT - 1985 STINGER - 26 ft. from the Miami Vice era, Best built boat in U.S. history with over 100 years of boat building. Certify Marine tech. private project boat, ready for re-power, have two Alpha Out-drives, all controls and gages, hall in fantastic condition, for sale with a aluminum trailer CASH ..... If you need details , go to [www.chriscraftstingers.com](http://www.chriscraftstingers.com)



**Model:** 1985 260  
**Location:** McGregor, MI  
**Asking Price:** \$9,900

26' 1985 Chris Craft Stinger for sale. 2 260HP motors. Comes with trailer. This boat is in good condition with newer upholstery. The exterior color is red/white and the cuddy is gray. There is a newer stereo system, small sink with storage area and porta potti below, a bimini top and cockpit cover. I can email extra photos if needed.



**Model:** 1986 222  
**Location:** Point Edward, ON, Canada  
**Asking Price:** \$15,500

immaculate, stored inside and as original as possible 22' Chris craft Stinger 222 center console powerboat. 30 hours on rebuilt small block merc engine done by Rudy Held performance, 10.1 flat top pistons, aluminum heads and intake, 750cfm holley, MSD ignition system, marine cam with 272 duration, roller rockers, chrome dress up kit. rebuilt out-drive with 19" Stainless prop (spare included), runs out at 58mph. Length 22'2". Beam 94". Power hatch with mirrored panels in engine compartment. seats 3 up front and 2 at rear. Has new custom made 65gal fuel tank. excellent on gas and a "must see eye catcher". Custom tandem axle matching trailer, led lites. SERIOUS INQUIRIES ONLY.



Model: 1987 222  
 Location: Dearborn, MO  
 Asking Price: \$13,500

Classic 1987 Chris Craft Stinger 222 with a 454/400Hp. This is a Mini Offshore Racing Style Boat With cuddy cabin and Tilt Center Steering Wheel With Clear Title. It has a complete tune-up, new starter, new coil, new marine battery, new thermostat, new impeller, New Blower, oil changes, new stereo, trailer with new tires/rear tail lights, sundeck upholstery and enough new upholstery to redo it again. It also comes with 4 skivests, 4 Docking buoys, 2 anchors and is primed and ready to go on the lake. I am asking 13,500.00 but I Am Willing To negotiate or Make Possible Trade For Great Condition Low Miles Chevy Conversion van or Handyman Special Home In Decent Neighborhood. Serious inquiries only please.



Model: 1987 222  
 Location: Key West, FL  
 Asking Price: \$8,500

FRESH WATER COOLED GM 350CI --EFI (GM TBI) --ESI DISTRIBUTOR --ALUMN IMCO POWER FLO MANIFOLDS --SS RISERS - THRU HULL SS TIPS --KILL SWITCH --DUAL BATT - BILLET BOX HOLDERS NEWLY UPHOLSTERED (2009) ELECTRIC HATCH CUSION & REAR SEATS --FERRARI RED & WHITE-- --MARINE STAR BOARD ENG. COMPART. --TRANSOM MOUNTED SKI TOW POST --DOCKING LIGHTS --REMOVABLE SKY LIGHT CUDDY HATCH --FULL COVER & TRAVEL TONNEAU --COAST GUARD EQUIPPED OMC KING COBRA -- SS PROP -----SKEG, PROTECTED----- ALUMN MAGIC LOADER DUAL AXLE TRL.



Model: 1987 222  
 Location: Elk Grove Village, IL  
 Asking Price: \$7,200

\*REDUCED THOUSANDS\* 22ft. Chris Craft Stinger 222 (Baja Style) 70mph+ Full tank of gas-TURN KEY READY- buy today and BOAT TODAY! This well maintained Chris Craft 222 Stinger 22Ft. race boat runs FAST and LOUD!! \* Third Owner \*New Mercury Roller Motor in 1999 (from Mercury Racing) with 420hp (it is not a rebuilt motor or after market build) Approx. 200 hours. \$10,000 in parts and labor since 2006: ( all receipts available )(67 hrs since work done) \*New Eddie Marine Thunder Exhaust in 2007 \*Alpha SS Drive with heavy duty parts in 2006 (this is not a standard alpha) \*Thunderbolt 4 Ignition in 2007 \*Mirage 3 blade stainless steel prop \*additional work done includes: bellows, u-joint, gimbal bearing, belts, hoses, impeller, fuel pump, cap, rotor, spark plugs and wires, coil, radiator for power steering, battery, replaced wood under cushions on sun deck. Description: This deep v-hull is a smaller version of Chris Craft's 28ft. offshore racing boat \*Bolster seating- Center helm (steering) with split shifter. VDO Gauges, docking lights \*Bennett trim tabs. Race fairing. Motorized engine hatch. Automatic and manual bilge pump. All cabin, navigation and warning lights work. \*Seats 5 adults, ( Sleeps 2 adults in cabin- not common on a 22ft boat) \*No rips, stains, or tears inside or out on vinyl, snap in carpet (No pets, No smoking) \*Kenwood CD player. 400watt ADS amp 12 inch subs \*Halon automatic fire system and additional fire extinguisher. life vests, flare, and type IV (Makes you Coastguard Approved). \*Matching Oklahoma two axle trailer, custom wheels, surge braking system, new lights, newer tires. \*Cockpit and Mooring Cover. Bumpers, anchor, bow and stern ropes, cooler, noodles, swim ways loungeer \*\*\*\* THIS BOAT COMES WITH EVERYTHING YOU NEED TO ENJOY BEING ON THE WATER \*\*\*\*REDUCED THOUSANDS\*\* make reasonable offer.







**Model: 1987 260**  
**Location: Apollo Beach, FL**  
**Asking Price: \$14,999**

This is a very clean 1987 Chris Craft Stinger 260 on a 1995 Performance Trailer. This boat has been maintained with an open checkbook and it shows. The 350's have approx. only 40 hours on them, high rise Edelbrock intakes that are near new. This boat cruises at 3000 rpms or 35-38 mph with a top end of near 70 mph. It has a CD player, bolster seats, huge sundeck, refrigerator, swim platform with ladder, 2 stainless steel props. This one is ready for the water. It does come with a custom cover, however, it is age delicate and could be replaced. Really nice boat - Must see to appreciate it!



**Model: 1987 390**  
**Location: Hilton Head Island, SC**  
**Asking Price: \$89,500**

1987 Chris Craft Stinger 42ft. Mercruiser twin 496 engines, Myco trailer, deck awning, head, 3 batteries and fiberglass hull. We purchased the boat as a hull then totally restored it about 10 years ago. About 6 years ago we installed two new 496 magnum merc cruiser engines with currently about 200 miles. We rewired the entire boat about 3 years ago. This season we replaced the manifolds so the boat has been maintained and is in good working order. I would characterize the finishes of the boat as "worn around the edges" but as hinges and snaps corrode we replace them. The boat has a working head & shower Galley/ microwave/ref/sink TV stereo/cd/sat system/ ipod dock deck compass GPS



**Model: 1988 202**  
**Location: Rochester, NY**  
**Asking Price: \$8,000**

I have a super rare 88' chris craft stinger 202 for sale. It has 165 hours on the hull. This boat is like brand new. I literally just finished it. This is the coolest fiberglass speed boat that Chris Craft ever made and was made for the Miami Vice tv series. They were built in very limited quantities and there are only a handful of these left. There is a website dedicated to them, I know of no other boats that have a cult following. I built this one to be better than it was originally. It is an attention grabber. I get compliments on it wherever I am and have had numerous offers on it even before I restored it. I'm selling it because I'm getting married and need the money. I just put well over \$7500 into it this summer alone and have well over 12K into it total. I had planned on using it but sadly it needs to go. Weddings are insanely expensive and I'm finding out the hard way. I replaced the motor and outdrive. It has an OMC 4.3L v-6 and an OMC cobra outdrive. Next, I gutted the boat completely and installed new marine ply, fiberglass, carpet, custom built seats and engine cover and had everything professionally upholstered. I installed a new GT steering wheel, a Sony marine cd/mp3/satellite radio which sounds awesome, a new bilge pump, new fuel lines, new aluminum swivel/slider/adjustable height seat posts and new Tracker style folding seats. The interior work cost over \$4K alone but was well worth it. It came out awesome. I had a 4bbl. Rochester carb installed which brings the HP up to 205 and will do over 60MPH. I had the pin striping re-done on the boat and matching Shorelandr trailer. I replaced the tires, lights, and started to strip and repaint the entire trailer. It also has a new deep cycle battery. There are 2 swim platforms molded into the stern that have teak foot boards and they were also refinished and look great. I also just purchased a new trailerable cover for it. I even just filled the tank with ethanol free 93 octane fuel. I'm probably forgetting a lot. If you're interested you must include the words eighty-eight chris craft to get a response due to spammers. I know it's the wrong time of the year to sell a boat and I could get more for it this spring which is why I priced it where it is. It is well worth the money. Chris craft builds the very best boats around and this one is better than new.



**Model: 1988 260**  
**Location: Covington, LA**  
**Asking Price: \$10,500**

88 Chris Craft Stinger with 2- 330hpr 350 V8's We have redone all the exterior upholstery and 90% of the interior. New stereo and VHS Port engine has 50 hrs stbd has 300 hrs Remaining issues Stbd engine has a leaking exhaust manifold that needs to be addressed. I am connecting the stereo and VHS before it sells. I have also been reinforcing the swim deck. This boat is well worth the money and leaves plenty of room to make money on this boat if that is your choice. I have all documentation from new and from the original owner. Worth the time to look and see if it's your ticket to the Prop Stop.



**Model: 1988 311**  
**Location: South Shore, MA**  
**Asking Price: \$20,000**

1988 31 1/2' Chris Craft Stinger Center Console Performance Fisherman 2X Merc 200 HP engines, 1997; engines have less than 500 hours since new; always professionally maintained Stainless props Cuddy cabin with head and 7' V berth huge fish box, large live well white gel coat is absolutely mint, blue stripes have scratches Newer VHF, Brand new CD Stereo w 4 spkrs Brand new fish finder and redundant depth sounder 164 gal. fuel tank Full mooring cockpit cover Upholstered cockpit has some new cushions Anchor, rode, fenders, dock lines Tri axle aluminum Float On trailer with BRAND NEW galvi rims HUGE cockpit affords lots of room for fishing or family Boat is fast and a real head-turner and has always been maintained to the highest standard selling as I am looking at moving up \$20,000 or may trade for a Wellcraft St. Tropez or Trojan 10M



**Model: 1988 312**  
**Location: Pueblo, CO**  
**Asking Price: \$21,500**

33ft Chris Craft Stinger 312 1988 Twin Ford 460 7.5L V8 engines, only 360 hours on both, runs like a striped ape. 65mph on Pueblo Reservoir Great condition, everything works great, has freshwater sink, icebox, couch and table that turns into a bed with another bed up front, Sleeps 3 people 4000 Watt stereo with 15 speakers Meticulously maintained its whole life. Willing to trade for a Cabin Cruiser or House Boat. Can add cash to deal if your trade is worth more



**Model: 1988 313**  
**Location: Tarpon Springs, FL**  
**Asking Price: \$39,999**

1988 Chris-Craft 31.6 Stinger, By far the best Chris Craft Stinger you will ever find! I bought the boat 7 years ago and completely re-did the boat top to bottom, front to back. Everything works on the boat and runs like new. I live in Texas and only use the boat 4 days a year. Boat has Garmin 320C color GPS with SWFL blue chip and a Garmin 182C color fish finder. 6 disk CD stereo. Both T/225 Suzuki EFI engines were rebuilt with the outdrives being replaced with new out-drives and stainless steel Rapture counter rotating props. This boat is fast and beautiful and ready to fish or ride. The boat is professionally cared for by The Landing at Tarpon Springs. Has a custom canvas top covering the whole boat and comes with an all aluminum tri-axle trailer with new tires and wheels, brakes and lights. This boat is a must see if you want a classic, well built Chris Craft fishing boat. \$39999.



**Model: 1988 313**  
**Location: Houma, LA**  
**Asking Price: \$21,000**

1988 CHRIS CRAFT STINGER 313. TOTAL REFURBISHED IN 2010. NEW AWL GRIP PAINT, RAYMARINE (RADAR, CHART PLOTTER, GPS, DEEP SOUNDER/FISH FINDER & AUTO POLIT. MARINE RADIO, RICHIE COMPASS, SONY STEARO W/ 400 WATT AMP. 4 UNDERWATER LIGHTS THUR HULL, DOCKING LIGHTS & SPREADER LIGHTS TWIN 2 STROKE 1990 MODELS VX 76 DEGREE 250 HP W/ ALL EVEN COMPRESSION, 450 HRS. YAHAMA FUEL MANAGEMENT GAUGE. 180 GAL. FUEL TANK. 2 LIVE WELL BAIT TANKS, 3 LARGE ICE CREST WELLS. WASH DOWN STATION. AUTOMATIC TRIM TABS. CABIN SLEEP 2 FORWARD ANCHOR WELL ALWAYS WAREHOUSED Magic Tile Alum. triple axle trailer w brakes & all new wheels & tires.



**Model: 1988 375**  
**Location: Osage Beach, MO**  
**Asking Price: \$37,500**

Pump out head, frig, hot water heater, shower, shore power, cockpit cover, full cover, new isinglass, bimini top, sink in galley & bathroom. 1995 Fast Load triple axle trailer with EOH brakes & spare. Cruise speed is 50. 24 pitch Bravo I props. Boat produced in Bellingham, WA February 1988. Dyno sheets available. Make all offers - delivery available.



**Model: 1988 375**  
**Location: Grand Rapids, MI**  
**Asking Price:**

This boat is in excellent condition! Very clean and turn key!! Need sold!



**Model: 1988 313**  
**Location: Mt Sinai, NY**  
**Asking Price: \$19,500**

Center Console with Cuddy cabin. Two Mercury racing 225 3.0 liter outboards on a bracket and solid transom. Hardtop, with canvas. GPS and depth finder, fish finder. Three axle trailer with surge brakes.



**Model: 1983 260**  
**Location: Mashpee, MA**  
**Asking Price: \$5,800**

1983 hull, 26 foot, twin 260 hp Mercruiser GM 350's with Alpha drives, all in good running condition. Quiet through hub exhaust, new aluminum props. Large sun bed over engines in good shape. Large rear bench seat, 2 of the 3 cushions are in good shape, third has some rips. Double drop down bolster at helm, some small rips. Full teak swim platform and stainless steel 3 rung telescoping ladder. The boat needs misc cosmetic work like cleaning, buffing, teak finish, v-birth cabin needs new cushions and carpet or paint under them, fwd hatch has a crack, cockpit to cabin hatch is missing, bimini and camper top need some repair or replacement with a mooring cover. The price includes the Loadright aluminum bunk trailer in good condition. Will sea trial for a serious buyer. Priced to sell.



**Model: 1985 260**  
**Location: Gibraltar, MI**  
**Asking Price: \$14,900**

1985 26' Stinger, twin 5.7 L engines, sport deck and sport cuddy, with trailer.



**Model: 1988 312**  
**Location: Maurepas, LA**  
**Asking Price: \$10,000**

10,000 or will part engines out for 4,500 a piece ! Twin 502 GM Twana Marine Engines Bravo out-drives 4 blade 22p SST Props 150 gallon tank 2 batteries Marine radio 2 spare SST Props 4 in. Marine exhaust Shore power Porta Poti Anchor Landau Top Full dust cover Life jackets Comed on a 04 triple axel Magic Tilt Aluminum trailer Good tires and spare Needs some TLC Serious Inquiries Only



**Model: 1986 222**  
**Location: Baltimore, MD**  
**Asking Price: \$2,500**

Up for sale is my 86 Chris-Craft stinger 222. Have title in hand and trailer and title also, the boat does needs work but could be a very fun project. The haul is watertight no cracks or damage. The motor does need replaced which a good used engine will come with the sale, also interior is missing, outdrive is good. Great boat just needs some love and tlc which i cant provide at this time. Asking price is 2500.00 OBO willing to trade also let me know what you have.



**Model: 1983 390**  
**Location: Trenton, NJ**  
**Asking Price: \$39,900**

This boat must be seen to be appreciated! ... this model, the STINGER - was made very popular as it was featured in the very first season of the MIAMI VICE series in the 80's Dependable and Safe - Conservative 75+ MPH TOP SPEED and 50 MPH @ 3500 RPM Cruise Boat was originally built in 1983 before Murray take over, and has NOTCHED TRANSOM. This boat is in PERFECT condition and has always been well maintained as shown in the pictures below - You will not find a nicer example!!! 10 HOURS ON TWIN BALANCED AND BLUEPRINTED 454 (.60 OVER) 620 HP BLOWN CHEVY MOTORS B&M 250 BLOWERS WITH TWIN 850 CFM NICKERSON CARBS STELLINGS STAINLESS STEEL HEADERS (ELECTRIC AND PLUMBING SET UP FOR CMI MUFFLERS WITH AIR ACTUATION) MOTOR PARTS INCLUDE: EAGLE FORGED CRANKS EAGLE FORGED CONNECTING RODS CRANE HYDRAULIC ROLLER CAM CRANE ROLLER ROCKERS JE PISTONS CANTON HIGH CAP OIL PAN BILLET ALUMINUM OVAL FLAME ARRESTOR ALUMINUM TIMING COVER ALUMINUM VALVE COVERS MERCURY THUNDERBOLT IGNITION FLUID DAMPER BALANCER HARDWARE INCLUDES: ARP ENGINE FASTENERS SS BRAIDED FUEL LINES COMPLETELY RIGGED WITH STAINLESS STEEL FASTENERS THROUGHOUT ENTIRE BOAT Boat was repainted in 1992' with new single piece electric actuated lightweight engine hatch to facilitate easy access to engine compartment - and still has padded sun deck) ADDITIONAL UPGRADES INCLUDE: COCKPIT RE-UPHOLSTERED IN 1998 FRESH TRS DRIVES IN 2000 WITH BROVO 1 SS 4 BLADE PROPS FRESH BORG WARNER TRANSMISSIONS W/ HEAVY DUTY CLUTCH PLATES 2000 HYNAUTIC HYDRAULIC ASSISTED STEERING WITH MERCURY PRIORITY STEERING VALVE (which means boat will have power steering with either motor running) KEIKAFAER TRIM TABS NEW MERCURY HIGH PERFORMANCE KEIKAFAER POWER TRIM AND TAB PUMPS NORDSKOG SPEEDOMETER AND AUTOMETER GAUGES NEW FULL COCKPIT COVER AND FULL CANVAS WINTER COVER INCLUDED The following items are also available to the new owner: TWO TRS PARTS DRIVES - ONE SPARE TRANSMISSION - ALSO..... BEAUTIFUL MYCO TRIPLE AXLE TRAILER WITH TORSION SUSPENSION AND SS DISK BRAKES available for an additional \$9500.00!- (This trailer has been totally rebuilt and painted yellow in 2002' adding a full drive guard and top rail bridging.) Buyers are welcome to survey or inspection with appointment. The boat is kept indoors (out of the weather) in a private warehouse near Trenton NJ and is approximately 45 minutes from the Philadelphia International Airport.



**Model: 1986 390**  
**Location: Lazio, Italy**  
**Asking Price: €15,000**

Motor boat Chris Craft Stinger 39 made famous by the famous television series Miami Vice hull in excellent condition, engine mercruiser 350cv stern to review. internal cleaning. evaluate trade and barter with sailboats cabin boats boats fishing boats car motorcycle scooter vespa camper refrain from unserious proposals



**Model: 1988 312**  
**Location: Harrison Township, MI**  
**Asking Price: \$19,900**

1988 Chris Craft Stinger Electronics & Navigation: -STANDARD HORIZON VHF RADIO -DATA MARINE DEPTH SOUNDER -KEIKHAEFER ENGINE CONTROLS -VDO ENGINE ALARMS -VDO DASH GAUGES -RITCHIE COMPASS -MARINE TEC FUME DETECTOR Options/Remarks: THIS IS A FRESH WATER SINCE NEW CLASSIC OFFSHORE WITH FACTORY ORIGINAL UPGRATED BRAVO ONE OUT DRIVES. SHE HAS BEEN SHED KEPT FOR THE PAST 20 YEARS UNDER COVER & IS IN NEED OF A NEW HOME. THE BOAT IS ONSIDE FOR COMPLETE INSPECTION AT OUR HARRISON TWP LOCATION. -SHORE POWER W/ BATTERY CHARGER -T-BAR -V-BERTH -WET BAR WITH SINK CABIN -REMOVABLE CARPET RUNNERS -REMOVABLE CARPET -PORTA POTTY -COCKPIT BOLSTER SEAT -FULL MOORING COVER -COCKPIT COVER -BATTERY SWITCH -TRIM TABS -SST PROPS



**Model: 1987 390**  
**Location: Toledo, OH**  
**Asking Price: \$40,000**

A BEAUTIFUL 1987 39 FT. CHRIS CRAFT STINGER WITH TRI AXL. TRL. 2 NEW CRATE ENG. WITH 1080 HP EVERYTHING IS NEW WITH PAPERS IF YOU EVER WANTED TO GET INTO THE OFF SHORE STYLE OF BOATING THEN THIS IS A CHANCE OF A LIFETIME. FOR MORE INFO PLEASE CALL 419 262 0201 ASAP BECAUSE WHEN THE SNOW COMES AND WE STORE IT ,IT WILL BE TOO LATE AND THE SPRING PRICE WILL PROBABLY BE AROUND 50K 60K WHERE IT SHOULD BE. NOT SELLING BECAUSE WE HAVE TO, BUT JUST NOT AN OFF SHORE STYLE BOATER (MAY HAVE SOMETHING TO DO WITH AGE) BOAT HAS ABOUT 15 HRS. ON IT AND IT RUNS ABOUT 65 MPH HANDLES THE LAKE JUST FINE ENGINES ECT COST ABOUT 30K TRI AXLE TRL COST 7K PAINT JOB AROUND 20K CANVAS 1K NEW 4 BLADE 26" PROPS 2K SO YOU DO THE MATH AND GIVE ME A CALL ONLY ASAP @ 419 262 0201 THANKS FOR LISTENING



**Model: 1982? 260**  
**Location: Dawsonville, GA**  
**Asking Price: \$1,200**

1981 CHRIS-CRAFT 260 Stinger, Performance Cuddy - This awesome boat can handle any size big block power you can come up with. These Chris Craft Stingers and a very few others set the trend in performance cuddies that transends into todays designs. This is a true classic. It is set up for TRS Mercruiser but can be easily repowered with Mercruiser Bravo as well. This great boat is only 00. Trailer available.



Model: 1984 260  
Location: NJ  
Asking Price: \$25,000

up for sale is my 1984 Chris-Craft stinger totally redone in 2010 boat has new interior paint graphics wiring gauges steering wheel out drives and more the list goes on .this boat has never failed me always gets lots on attention from the looks of it very nice boat turn-key. It has twin merc260 with alpha drives its a 27 foot very nice boat must sell 25000 takes it must sell asap just bought new boat cant keep both must go bring cash take it home



Model: 1986? 222  
Location: Tallahassee, FL  
Asking Price: \$3,000

22 1/2' Chris Craft stinger needs work.... low hours on engine since rebuild but hasn't been ran in years, fresh when last used alpha outdrive also. There is no interior and needs steering and probably control cables etc.....I honestly don't know what all it will need that's why I'm letting it go for 3,000. including the aluminum I-beam trailer. The boat needs work but its a good start. I will also consider trading for a cruiser type motorcycle ....



Model: 1986 390  
Location: Wilmington, NC  
Asking Price: \$40,000

Chris Craft 390xl Stinger , 40 ft Miami Vice boat , twin 500hp 454 big blocks, new TRS drives, velvet drive transmissions, New paint and upholstery, Runs A-1 but, interior needs finished, new tri-axle trailer , Moving overseas cant take it with me! \$45k or best offer, also will trade for small expensive items.



Model: 1986 222  
Location: Naples, FL  
Asking Price: \$5,000

CHRIS CRAFT STINGER 222 CLASSIC GO FAST BOAT 24 FT LONG WITH 3 SEATER COCKPIT AND CENTER DRIVER, HAS TWO FOLDABLE CHAIRS IN BACK , SEATS 5 BUT BOAT ALLOWS 6 PEOPLE ALL BLACK PAINT, NEEDS TO BE TOUCHED UP BOAT RAN GREAT TILL 5 MONTHS AGO ... I TRIED TO START IT RECENTLY AND FOUND OUT IT HAS A LOCKED MOTOR! IITS POWERED BY A 350 SMALL BLOCK. YOU CAN FIND THEM ON SWFL CRAIGSLIST FOR ONLY \$450 THEN U NEED TO ISTALL IT ALL PARTS ON MOTOR ARE STILL GOOD, STARTER IS NEW, MANIFOLDS AND RISERS GOOD CONDITION, HAS STRAIGHT SS PIPES " VERY LOUD" DRIVE IS NEW 2 YEARS OLD WITH 1 YEAR WARRANTY LEFT, ALL BILGE PUMPS, ELECTRONICS AND DRIVE MORKS FINE. I MOVE IN 3 DAYS AND IM TRYING TO SELL IT BEFORE THE MOVE IF NOT I HAVE TO BRING THE BOAT TO MY MECHANIC TO FIX CAUSE I HAVE NO PLACE TO STORE IT AND IT WILL NO LONGER BE FOR SALE .



Model: 1984? 312  
Location: LaSalle, MI  
Asking Price: \$29,900

Really nice 32' Stinger Custom paint low hour BBC Pictures do not do the boat justice.



Model: 1988? 202  
Location: Valleyford, WA  
Asking Price: \$4,000

1988 20' Chris-craft 202 Stinger. Very rare sportboat. 4.3 V6 Mercruiser with stainless prop, matching tandem axle trailer with brand new tires. Honest 50Mph boat. \$4000.00 O.B.O.



Model: 1988 312  
Location: Spokane, WA  
Asking Price: \$24,950

1988 Chris Craft 312 Stinger. Twin 454with Bravo outdrives, custom paint, radar arch, stereo. Triple axle trailerwith custom wheels. Cockpit cover and full cover. Professionally maintained Stored inside, Good condition. \$24,950.00 obo



Model: 1987 222  
Location: Savannah, SC  
Asking Price: \$1,300

Selling my 87 chris craft stinger 222 with trailer. Comes with a short block 350 Chevy and matching heads, New carpet. Has a nice size cuddy cabin. Boat is in great condition. I do not have a title for the boat. Not interested in trading, I just want to sell. Asking \$1300 or best offer. Serious Inquiries only





**Model: 1984 230**  
**Location: Fredricksburg, VA**  
**Asking Price: \$7,200**

1984 Chris Craft Stinger. This is a must have boat. Its all new, New floor and carpet, New seats and custom built motor cover. This boat has been renovated almost 100%. All new structure parts are of composite board and will not rot, retain water or go soft. Comes with a life time warranty. Motor is a 5.7 Jasper fresh out the box, Less then 20 hours on this motor and out drive. Out drive is new with stainless steel prop. Boat has a custom made snap on cover new last year with 2 pole supports and vent caps. Dual axel roll on trailer with spare tire. All the work on this boat was done last winter and done between 2 shops only. Both shops do high quality work and it show in this boat. The owner of this boat was restoring it when he got his call from God. We are hopping to sell this boat for \$7,200.00 to someone that will finish the work needed. It needs nothing to go boating. Turn key and run... The paint is all that is left to restore or repaint. This is a good buy. Used boat with new everything.



**Model: 1989 385**  
**Location: Grasonville, MD**  
**Asking Price: \$34,900**

SHE'S A "CHRIS CRAFT" SHE IS THE POPULAR AND ROOMY "385 STINGER BUILT BY THE QUALITY BUILDERS AT CHRIS CRAFT. THIS BOAT IS POWERED BY TWIN 420 CID MERC'S WITH TRS OUTDRIVES AND 420 H.P. EACH.. HER ENGINES HAVE 480 HOURS SINCE HER MAJOR REBUILD AND 480 HOURS ON HER TRS OUTDRIVES AFTER REBUILD. THE BOAT ONLY HAS 980 TOTAL HOURS. THIS BOAT IS NICELY EQUIPPED WITH AIR CONDITIONING, REVERSE CYCLE HEAT, ELECTRONICS, SHORE POWER, K PLANES, FULL CANVAS ENCLOSURE, SWIM PLATFORM, VACU FLUSH HEAD, AM FM CD PLAYER, BLUE HULL, NEXTRAIL ALUMINUM TRAILER AND SO MUCH MORE. THIS BOAT LOOKS LIKE SHE IS GOING 60 MPH JUST SITTING ON THE TRAILER! THE CHRIS CRAFT WILL SLEEP 4 ADULTS AND HAS AN ENCLOSED HEAD WITH SHOWER TO MAKE LIFE COMFORTABLE DURING A LONG STAY ON THE WATER. A BIMINI AND FULL ENCLOSURE IS INSTALLED ON THIS BOAT TO MAKE RAINY DAYS A PURE DELIGHT WHILE OUT ON THE WATER. BOAT IS HIGHLIGHTED WITH A BLUE HULL. HER TRAILER IS A "NEXTRAIL" AND WILL HOLD UP TO 42 POUNDS OF BOAT.



**Model: 1985 390**  
**Location: Stockton, CA**  
**Asking Price: \$32,000**

1985 Chris-Craft Stinger, 1985 Chris-Craft Stinger offshore powerboat. Twin 454's bored over to 470, 80+ mph. Custom paint, interior upholstery is new, new gauges, sleeping area with full amenities. Womac trailer included. Very nice and runs great. Good all around family powerboat. Must sell \$32,000. OBO.



Model: 1985 260  
Location: Brick, NJ  
Asking Price: \$13,000

i have 1985 chris craft stinger limited. With brand new twin stroker 383 450 hp each combined boat makes 900 hp marine engines with fresh water flush with salt away wash out alpha 1 out drives just totally redone to handle the extra horse power of the stroker motors and it has gill offshore dry exhaust racing system .it also has drop down bolster seats and blue neons through the boat and a custom made aluminum swim platform the boat has a ton of new parts like mercury racing trim pumps, new starters ,water pumps ,eddelbrock fuel pumps, new hoses, batteries, just rebuilt outdrives ,cleaver props, impellers, tons more to much to list spend \$16,000 in the motor compartment alone the boat comes with a roller trailer with a new winch and new rollers bot was only run 3 hours with new motors on land all work done by a mercruiser master tech boat needs back seat redone but everything else works on the boat just needs a little tic to have an amazing boat but runs and drives great cash only in person any other offer will be deleted please dont low ball me if you know boats you will know the parts alone are worth more then im asking make me an offer just might take it no stupid offers please close to what im asking will be entertained



Model: 1986? 222  
Location: Montgomery, MN  
Asking Price:

Up for sale/trade Chris Craft stinger.. winter and summerized every season at "boat doctor marine " in Montgomery .. powerfull inboard.. racestyle cockpit with center steering and throttle controls..dual batteries.. ipod/cd player radio with 2,000 watt amp and 15 inch sub with nice sounding loud 3 way 6x9's.. a lot of bass due to the closed bow on the boat.. will give you a nice massage when laying on the front.. open to all reasonable offers/trades.. I love v-8 cars.. Mustangs.. Camaros.. etc.. things like that.. Muscle cars are preferred but will cosider other options.. YAMAHA toys are a plus.. what do you got? Open to trades for anything cool.. No is the worst I can say.. thanks for looking..



Model: 1987 202  
Location: Ballston Spa, NY  
Asking Price: \$4,800

for sale chris-craft stinger 202. has new battery runs strong garage kept. with trailer title in hand for the boat. the trailer will need a homemade reg. trailer has new tires and rims. lights work..there is a v6 in the boat has a good speed prop. its not a race boat like i said v6 and is a great ride. come take look make offer I'm making room.